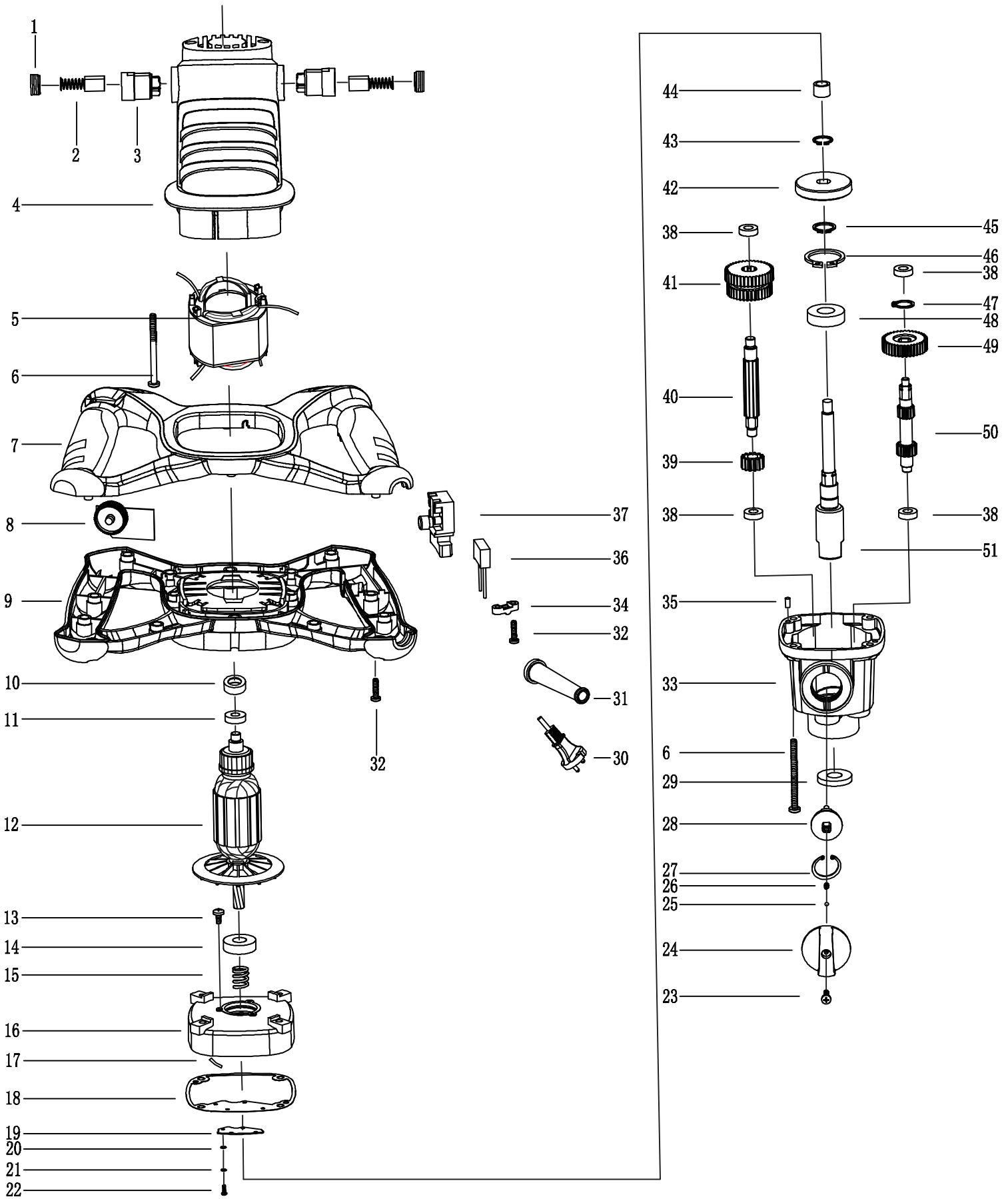


PM 1600 Handmixer 5907803901





Ersatzteile / Spare parts

PM 1600

Handmixer

5907803901

update: 08.07.2016

| Skizze | Art.Nr. | Benennung | description |
|--------|------------|---------------------------------------|--------------------------|
| 2 | 5907803001 | Kohlebürsten | carbon brush |
| 5 | 5907803002 | Stator | stator |
| 8 | 5907803003 | Drehzahleinstellung mit Platine | speed control |
| 11 | 88002490 | Rillenkugellager 608Z | bearing 608Z |
| 12 | 5907803004 | Rotor | rotor |
| 14 | 06206001 | Rillenkugellager 6001 Z | Bearing6001Z |
| 23-27 | 5907803005 | Drehzahleinstellung (Gang 1 / Gang 2) | Speed Shift Knob |
| 33 | 5907803006 | Getriebekasten | Gear box |
| 36 | 3906401014 | Kondensator | capacitor |
| 37 | 5907803007 | Schalter | switch |
| 38 | 5907803008 | Kugellager 698 Z | bearing 698 Z |
| 40 | 5907803009 | Antriebsspindel | Third initiative spindle |
| 41 | 5907803010 | Antriebszahnrad | second driven gear |
| 48 | 06406003 | Kugellager 6003 | bearing6003 |
| 50 | 5907804006 | Zahnrad | second driven gear |
| o.Abb. | 5907800701 | Mixerstab | mixing paddle |

- 4 5907803011 kryt motoru
- 7 5907803012 horní část madla
- 9 **5907803013 spodní část madla**